

POWER FLOW OPERATION

B3E051701030A08

Component description

Component	Function
Forward clutch	Transmits the input torque from the turbine shaft to the front sun gear. Operates in the forward range of the first, second, or third gear position.
3-4 clutch	Transmits the input torque from the turbine shaft to the rear planetary carrier. Operates in the forward range of the third or fourth gear position.
Reverse clutch	Transmits the input torque from the turbine shaft to the rear sun gear. Operates when the vehicle is backing up.
2-4 brake band	Locks rotation of the reverse drum and fixes the rear sun gear. Operates in the second or fourth gear position.
Low and reverse brake	Fixes the rotation of the front internal gear. Operates when the vehicle is backing up or in the first gear position (L range HOLD and M range).
One-way clutch	Locks the counterclockwise rotation of the front internal gear in the first gear position.
Planetary gear	The planetary gear functions as a transmission due to the engagement/ disengagement of clutches and/or brakes, converts the transmitted driving force of the turbine shaft and transmits it to the output gear.

Note

- All directions of rotation are viewed from the torque converter.

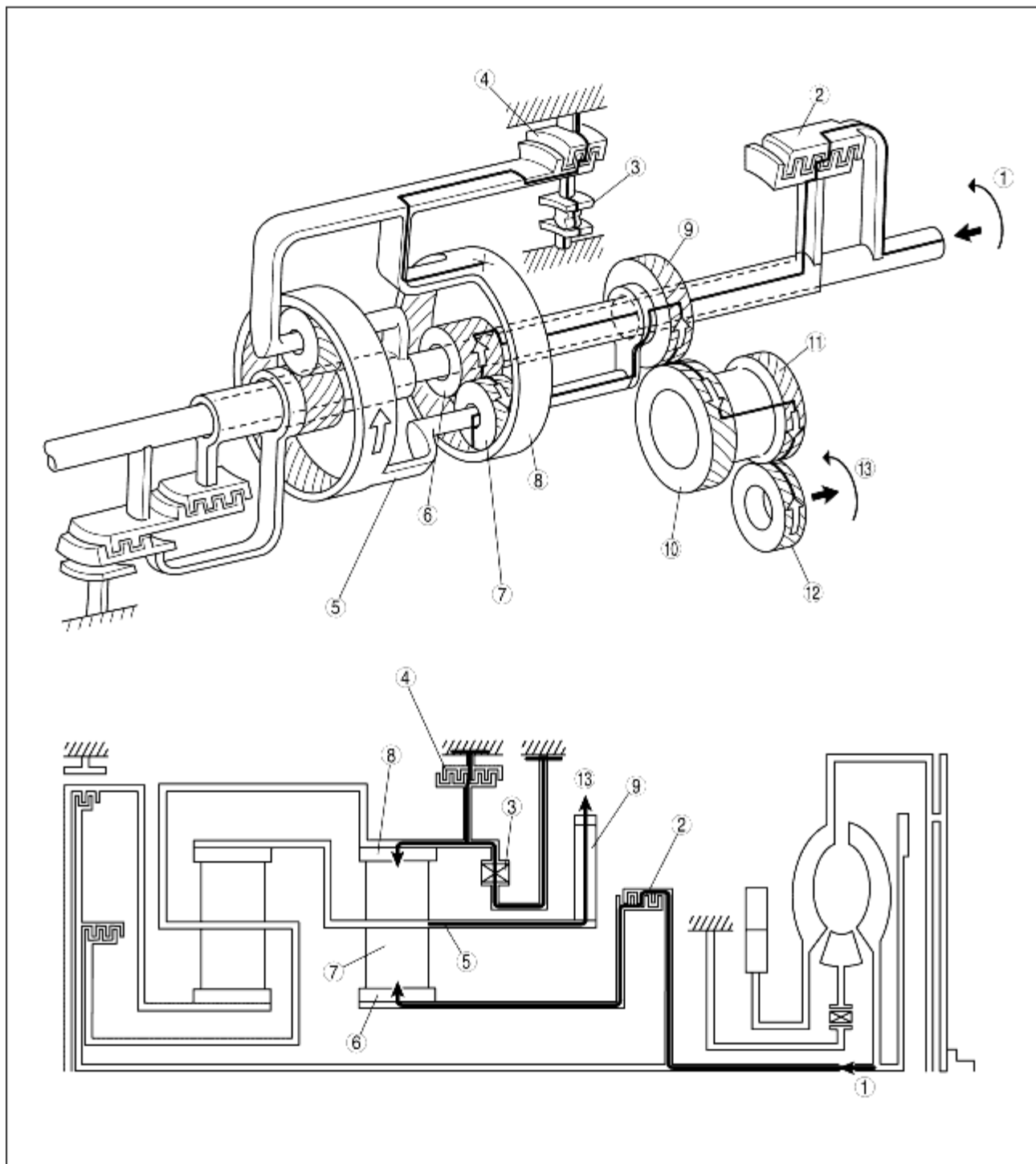
1GR (D range)



file:///R:/My%20Websites/Files/001%20NEW/Mazda%203%20BK/engine/A01/html/... 15/02/2019

9	Secondary gear
10	Output gear
11	Ring gear (Differential)
12	Output

1GR (4AT: L range HOLD, Sport AT: M range)

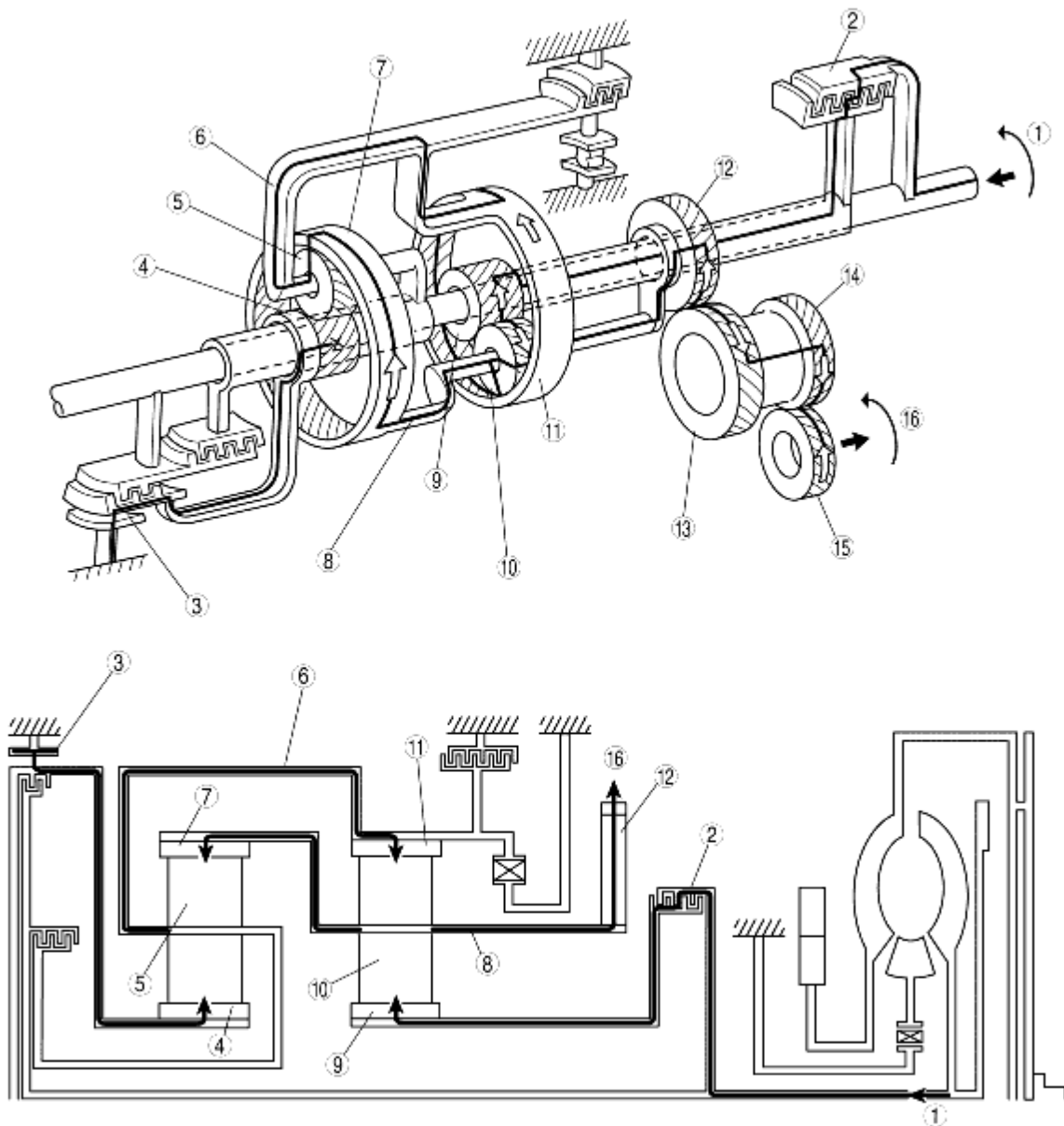


B3E05 17T006

1	Input
---	-------

2	Forward clutch
3	One-way clutch
4	Low and reverse brake
5	Front planetary carrier
6	Front sun gear
7	Front pinion gear
8	Front internal gear
9	Primary gear
10	Secondary gear
11	Output gear
12	Ring gear (Differential)
13	Output

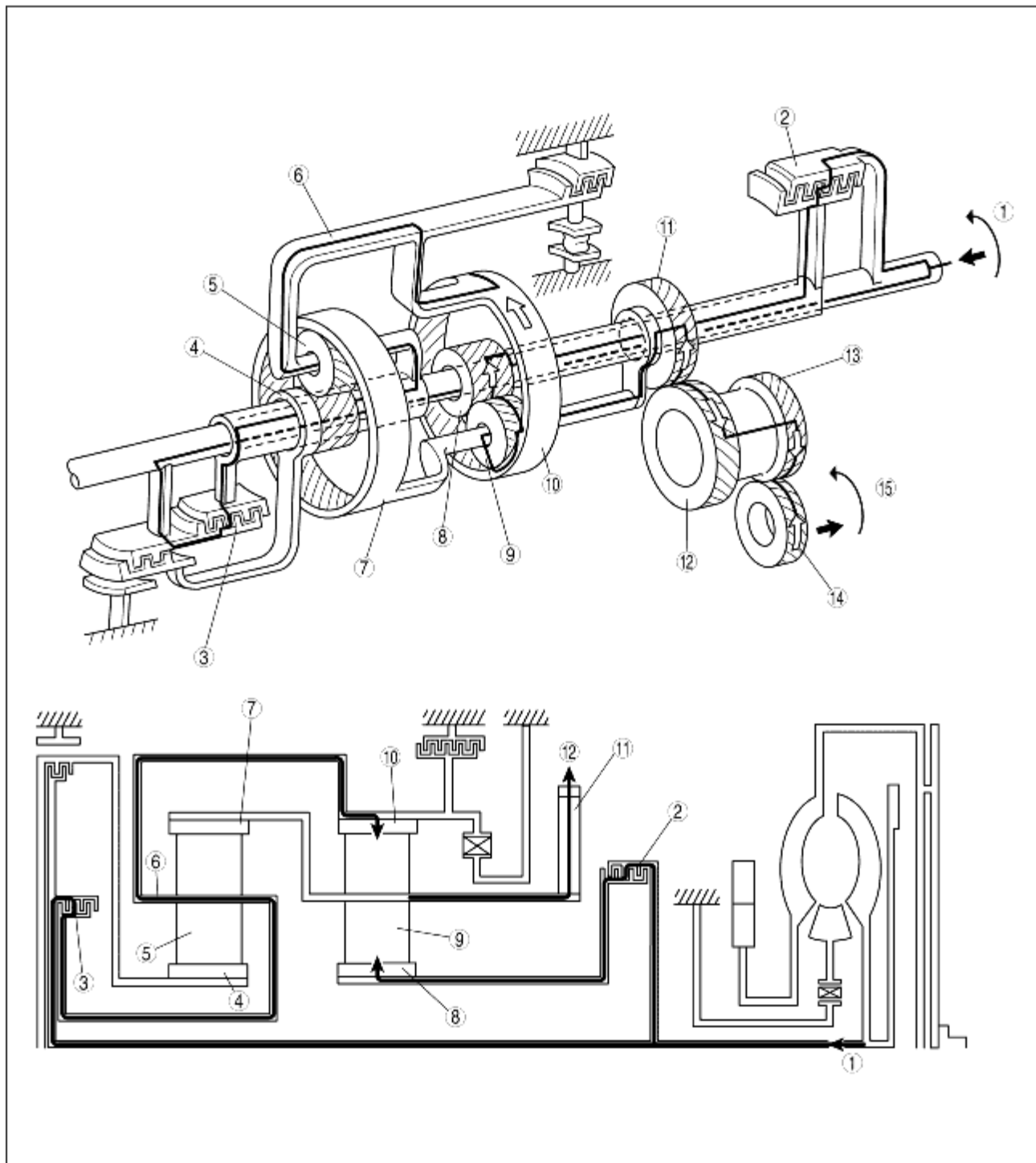
2GR



B3E05 17T007

1	Input
2	Forward clutch
3	2-4 brake band
4	Rear sun gear
5	Rear pinion gear
6	Rear planetary carrier
7	Rear internal gear
8	Front planetary carrier

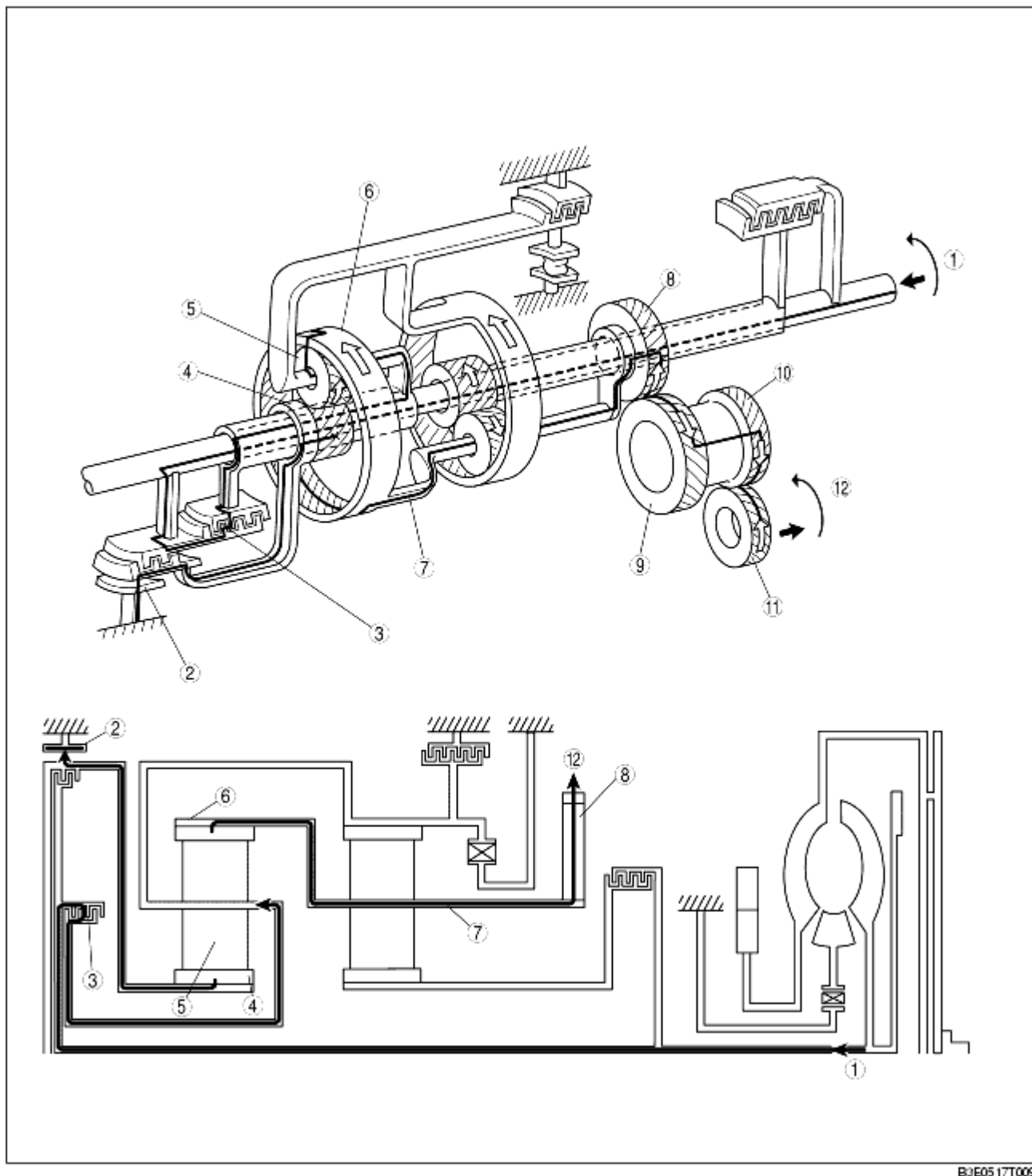
9	Front sun gear
10	Front pinion gear
11	Front internal gear
12	Primary gear
13	Secondary gear
14	Output gear
15	Ring gear (Differential)
16	Output

3GR

B3E05 17T008

1	Input
2	Forward clutch
3	3-4 clutch
4	Rear sun gear
5	Rear pinion gear
6	Rear planetary carrier
7	Rear internal gear
8	Front sun gear
9	Front pinion gear
10	Front internal gear
11	Primary gear
12	Secondary gear
13	Output gear
14	Ring gear (Differential)
15	Output

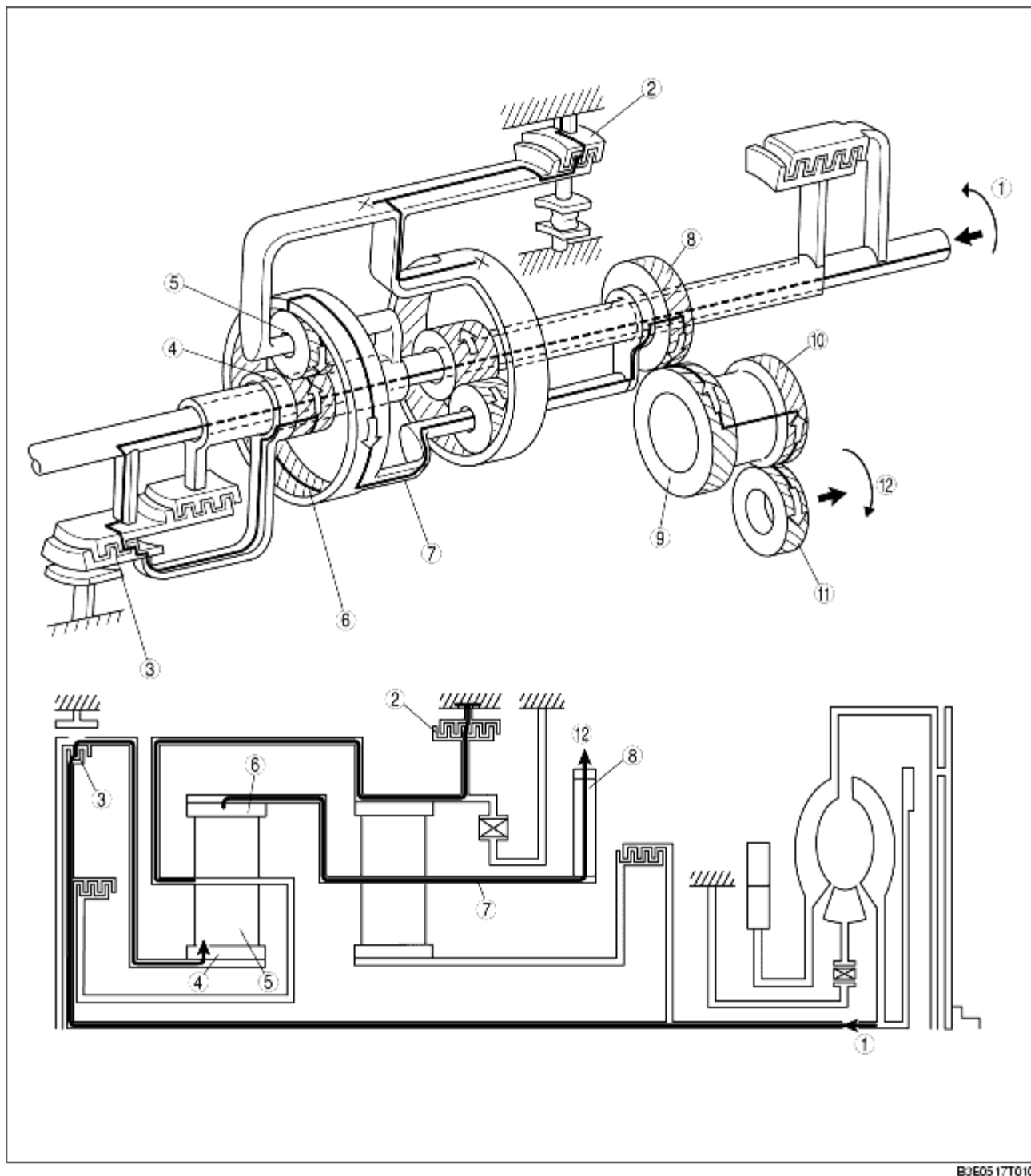
4GR



B3E05 17T009

1	Input
2	2-4 brake band
3	3-4 clutch
4	Rear sun gear
5	Rear pinion gear
6	Rear internal gear
7	Front planetary carrier
8	Primary gear

9	Secondary gear
10	Output gear
11	Ring gear (Differential)
12	Output

R position

B3E05 17T010

1	Input
---	-------

2	Low and reverse brake
3	Reverse clutch
4	Rear sun gear
5	Rear pinion gear
6	Rear internal gear
7	Front planetary carrier
8	Primary gear
9	Secondary gear
10	Output gear
11	Ring gear (Differential)
12	Output